

## ▶ Polypropylene In-Line Holders

- **Compatible** with a wide range of chemicals and temperatures
- **Exterior locking ring design** allows the unit to be assembled quickly and efficiently without tearing the membrane
- **Two sizes available**, 25 mm for volumes (liquids) <50 ml and 47 mm for up to 1 liter
- **Autoclavable**, at 121°C for 20 minutes



PP 25



PP 47

## ▶ Specifications

	PP 25	PP 47
<b>Materials:</b>		
Body and support screens	Polypropylene	Polypropylene
O-ring (standard)	Silicone	Silicone
<b>Connection:</b>		
Inlet	Female Luer-lock	Combination 1/4" NPTM and female Luer slip
Outlet	Male Luer slip	Combination 1/4" NPTM and female Luer slip
<b>Pressure:</b>		
Inlet	5 kg/cm <sup>2</sup>	5 kg/cm <sup>2</sup>
Differential	3 kg/cm <sup>2</sup>	5 kg/cm <sup>2</sup>
<b>Temperature:</b>		
Maximum (autoclave) 1 bar, 20 min.	121°C	121°C
Maximum operating (liquids)	80°C	80°C
<b>Filter Specifications:</b>		
Filter size	25 mm	47 mm
Prefilter size	21 mm	42 mm
Filtration area	3.5 cm <sup>2</sup>	13.5 cm <sup>2</sup>
Recommended volume	<50 ml	Up to 1 liter
<b>Dimensions:</b>		
Diameter	30 mm	65 mm
Height	30 mm	50 mm

## ▶ Ordering Information

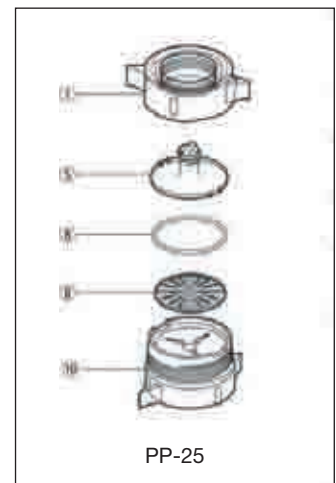
Model	PP 25	PP 47
Cat. No.	43303010	43303020
Packing	6	1

## Polypropylene In-Line Holders

### Typical initial liquid flow rates [ml/min]

Membrane Pore size [µm]	PP 25	PP 47
0.20	35	250
0.45	80	600
1.00	320	1700
3.00	740	2800

Conditions: Water, 20°C, filtered through MCE membranes at 1 kg/cm<sup>2</sup> differential pressure.



### Replacement Parts

		PP 25
1	Locking ring, outer	44540101
5	Inlet cap	44540102
6	Support screen	44540104
8	Inlet cap O-ring (standard)	44540106
10	Outlet base	44540103

		PP 47
1	Locking ring, outer	44501201
5	Inlet cap	44501202
6	Support screen	44501004
7	Locking O-ring	44501204
8	Inlet cap O-ring (standard)	44501204
9	Outlet base O-ring (standard)	44501208
10	Outlet base	44501203
11	Outlet adapter (male luer slip to hose barb)	44501013

